

Riyad Mubasher Pro 10+

Contents

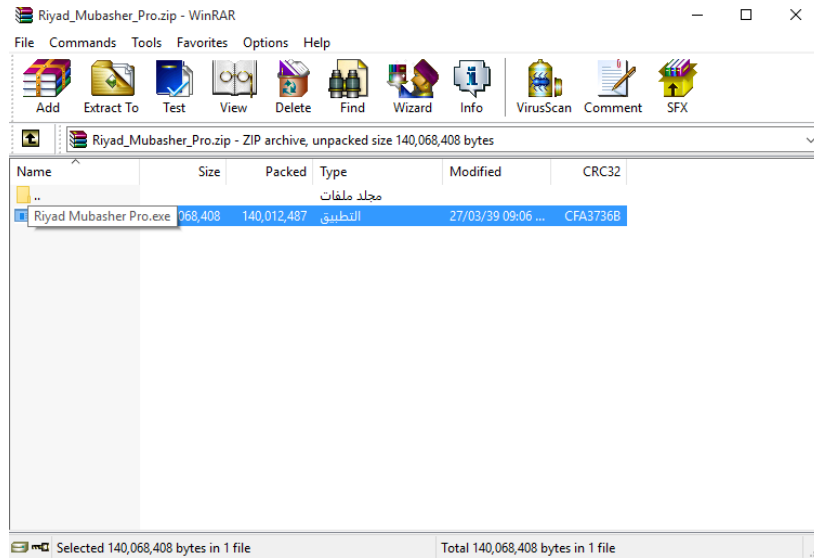
Download and install Mubasher Pro	3
The main Page	6
Riyadh Mubasher Pro platform for prices and real-time data	8
Notes and settings for Mubasher Pro 10	10

Download and install Riyad Mubasher Pro 10+ :

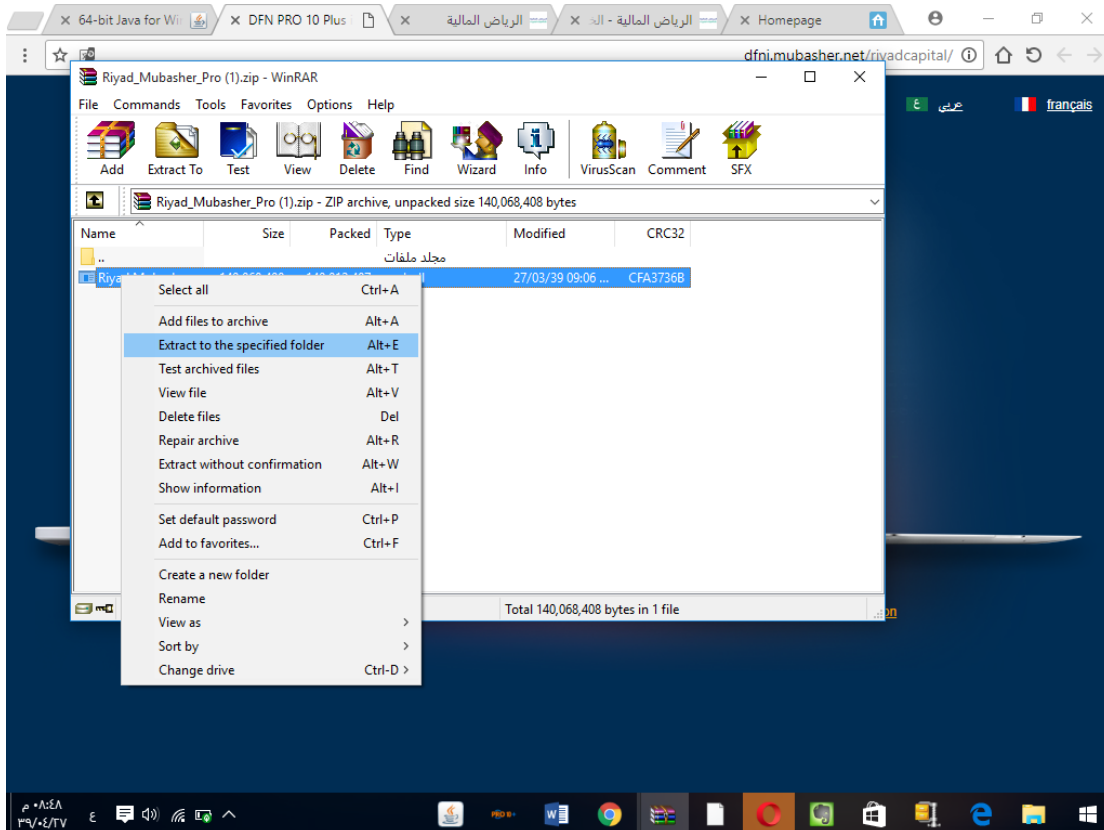
1 / After subscribing to the service from Riyad Capital Online, Click on the link on the subscription page and select the operating system for your PC



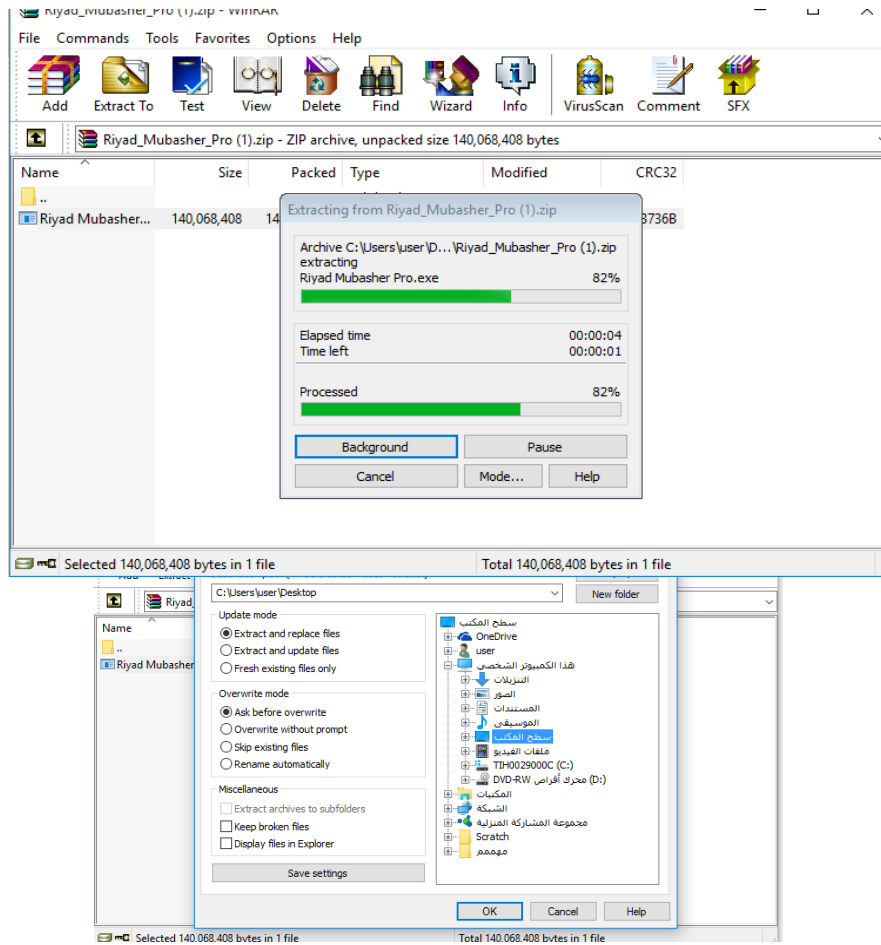
2/Open the file from downloads folder



3/ Extract the file to the desktop



4/ Complete the installation process

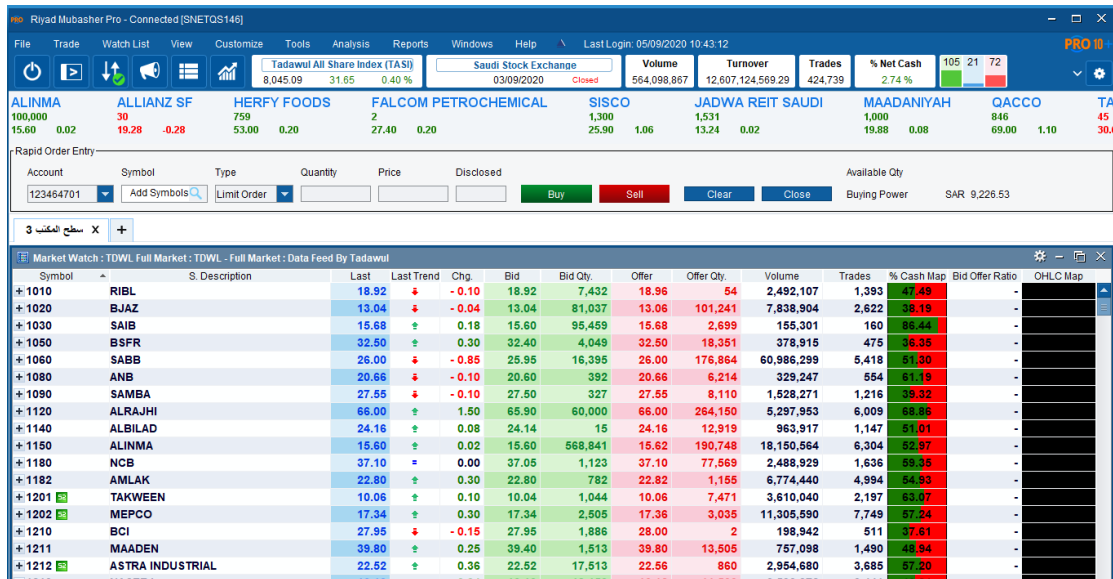


5 / The program icon will appear on the desktop



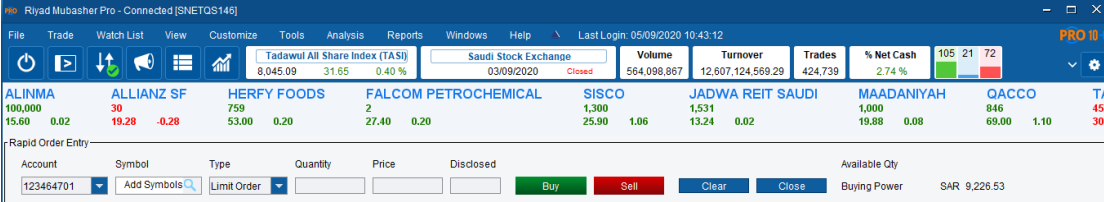
The main Page:

1/ placing orders in the main menu, in the event of Sell, double-click on the bid column and the bid quantity for any stock. A sell order screen should be open with the same data. In case of buy, double-click on the offer column and buy order screen should be open with the same data.

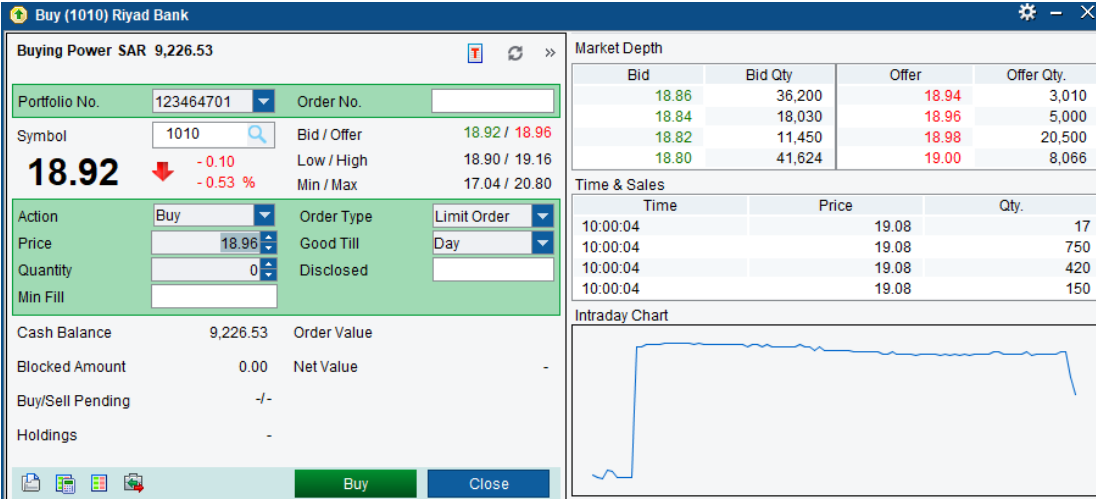


Symbol	S. Description	Last	Last Trend	Chg.	Bid	Bid Qty.	Offer	Offer Qty.	Volume	Trades	% Cash Map	Bid Offer Ratio	OHLC Map
* 1010	RIBL	18.92	↓	-0.10	18.92	7,432	18.96	54	2,492,107	1,393	47.49	-	
* 1020	BJAZ	13.04	↓	-0.04	13.04	81,037	13.06	101,241	7,838,904	2,622	38.19	-	
* 1030	SAIB	15.68	↑	0.18	15.60	95,459	15.68	2,699	155,301	160	86.44	-	
* 1050	BSFR	32.50	↑	0.30	32.40	4,049	32.60	18,351	378,915	475	36.35	-	
* 1060	SABB	26.00	↓	-0.85	25.95	16,395	26.00	176,864	60,986,299	5,418	51.30	-	
* 1080	ANB	20.66	↓	-0.10	20.60	392	20.66	6,214	329,247	554	51.19	-	
* 1090	SAMBA	27.55	↓	-0.10	27.50	327	27.55	8,110	1,528,271	1,216	39.32	-	
* 1120	ALRAJHI	66.00	↑	1.50	65.90	60,000	66.00	264,150	5,297,953	6,009	81.35	-	
* 1140	ALBILAD	24.16	↑	0.08	24.14	15	24.16	12,919	963,917	1,147	51.01	-	
* 1150	ALINMA	15.60	↑	0.02	15.60	568,841	15.62	190,748	18,150,564	6,304	52.97	-	
* 1180	NCB	37.10	=	0.00	37.05	1,123	37.10	77,569	2,488,929	1,636	59.35	-	
* 1182	AMLAQ	22.80	↑	0.30	22.80	782	22.82	1,155	6,774,440	4,994	54.93	-	
* 1201	TAKWEEN	10.06	↑	0.10	10.04	1,044	10.06	7,471	3,610,040	2,197	63.07	-	
* 1202	MEPCO	17.34	↑	0.30	17.34	2,505	17.36	3,035	11,305,590	7,749	57.24	-	
* 1210	BCI	27.95	↓	-0.15	27.95	1,886	28.00	2	198,942	511	37.61	-	
* 1211	MAADEN	39.80	↑	0.25	39.40	1,513	39.80	13,505	757,098	1,490	48.94	-	
* 1212	ASTRA INDUSTRIAL	22.52	↑	0.36	22.52	17,513	22.56	860	2,954,680	3,685	57.20	-	

2/ Quick order, which appears at the top of the screen and automatically interacts with the main watch list. Once you click on any stock in the main menu, the data appears immediately in quick order screen.



The screenshot shows the 'Riyad Mubasher Pro' trading platform. At the top, there's a menu bar with options like File, Trade, Watch List, View, Customize, Tools, Analysis, Reports, Windows, and Help. Below the menu is a status bar with market data: Tadawul All Share Index (TASI) at 8,045.09 (up 31.65, 0.40%), Saudi Stock Exchange, Volume 564,098,867, Turnover 12,607,124,569.29, Trades 424,739, and % Net Cash 2.74%. A watch list below shows several stocks: ALINMA, ALLIANZ SF, HERFY FOODS, FALCOM PETROCHEMICAL, SISCO, JADWA REIT SAUDI, MAADANIYAH, and QACCO. Below the watch list is a 'Rapid Order Entry' form with fields for Account (123464701), Symbol (Add Symbols), Type (Limit Order), Quantity, Price, Disclosed, and buttons for Buy, Sell, Clear, and Close. The Available Qty is SAR 9,226.53.



The screenshot shows the 'Buy (1010) Riyad Bank' order entry screen. The top left shows 'Buying Power SAR 9,226.53'. The main area is divided into several sections:

- Portfolio No.:** 123464701, **Order No.:** (empty)
- Symbol:** 1010, **Bid / Offer:** 18.92 / 18.96
- Price:** 18.92 (with a red arrow indicating a decrease of -0.10 and -0.53%), **Low / High:** 18.90 / 19.16
- Quantity:** 0, **Min / Max:** 17.04 / 20.80
- Action:** Buy, **Order Type:** Limit Order
- Price:** 18.96, **Good Till:** Day
- Quantity:** 0, **Disclosed:** (empty)
- Min Fill:** (empty)
- Cash Balance:** 9,226.53, **Order Value:** (empty)
- Blocked Amount:** 0.00, **Net Value:** -
- Buy/Sell Pending:** -/-
- Holdings:** -

 On the right side, there are two panels:

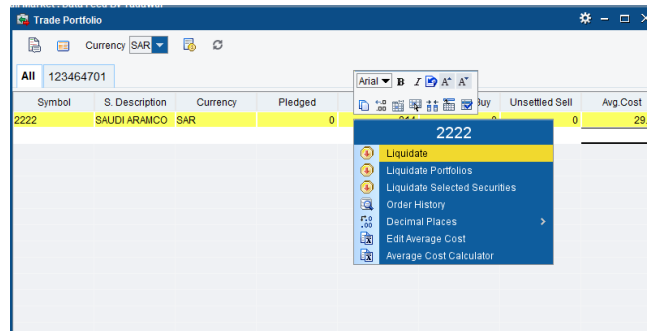
- Market Depth:** A table showing bid and offer prices and quantities.

Bid	Bid Qty	Offer	Offer Qty
18.86	36,200	18.94	3,010
18.84	18,030	18.96	5,000
18.82	11,450	18.98	20,500
18.80	41,624	19.00	8,066
- Time & Sales:** A table showing trade times, prices, and quantities.

Time	Price	Qty
10:00:04	19.08	17
10:00:04	19.08	750
10:00:04	19.08	420
10:00:04	19.08	150
- Intraday Chart:** A line chart showing the price movement of the stock throughout the day.

 At the bottom, there are buttons for 'Buy' and 'Close'.

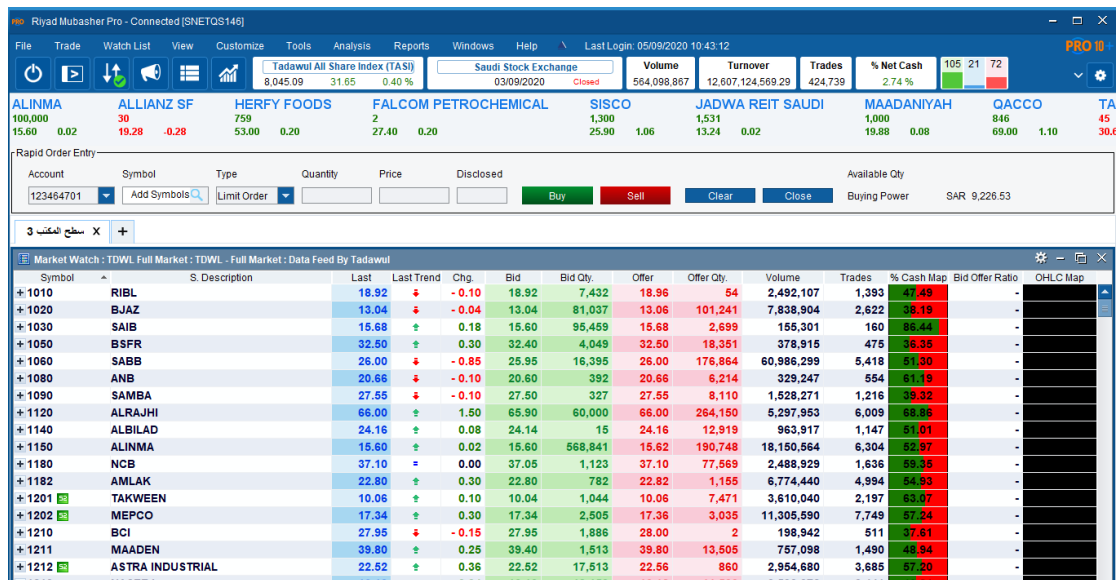
3 / The Portfolio screen, which enables you to view the details of the portfolio, such as profit and loss based on the cost price, market price and other data, with the possibility of liquidating each share separately or the entire portfolio.



4 / List of orders, enables you to view all information related to orders in the market, possibility of modify and cancel.

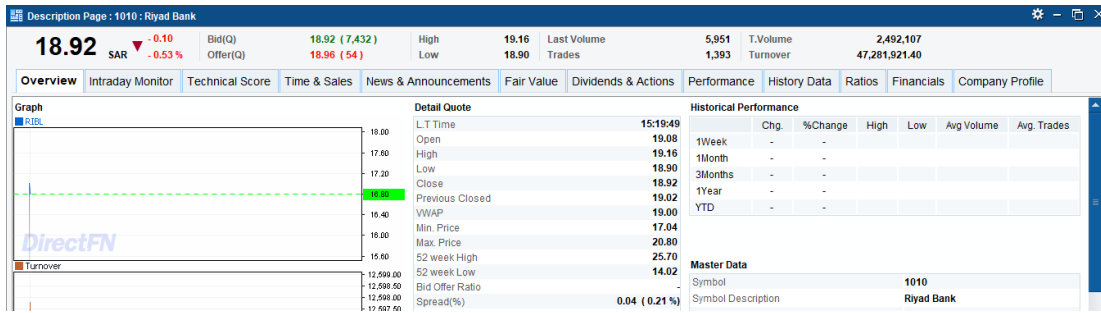
Riyad Mubasher Pro 10+ platform for prices and real-time data

1/ A follow-up list for all shares traded in the market, with the ability to define a selection of columns to be determined according to the desire of each client



Symbol	S. Description	Last	Last Trend	Chg.	Bid	Bid Qty.	Offer	Offer Qty.	Volume	Trades	% Cash Map	Bid Offer Ratio	OHLC Map
* 1010	RIBL	18.92	↓	-0.10	18.92	7,432	18.96	54	2,492,107	1,393	47.49	-	
* 1020	BJAZ	13.04	↓	-0.04	13.04	81,037	13.06	101,241	7,838,904	2,622	38.19	-	
* 1030	SAIB	15.68	↑	0.18	15.60	95,459	15.68	2,699	155,301	160	86.44	-	
* 1050	BSFR	32.50	↑	0.30	32.40	4,049	32.50	18,351	378,915	475	36.35	-	
* 1060	SABB	26.00	↓	-0.85	25.95	16,395	26.00	176,864	60,986,299	5,418	51.30	-	
* 1080	ANB	20.66	↓	-0.10	20.60	392	20.66	6,214	329,247	554	61.19	-	
* 1090	SAMBA	27.55	↓	-0.10	27.50	327	27.55	8,110	1,528,271	1,216	39.32	-	
* 1120	ALRAJHI	66.00	↑	1.50	65.90	60,000	66.00	264,160	5,297,953	6,009	56.86	-	
* 1140	ALBILAD	24.16	↑	0.08	24.14	15	24.16	12,919	963,917	1,147	51.01	-	
* 1150	ALINMA	15.60	↑	0.02	15.60	568,841	15.62	190,748	18,150,564	6,204	52.97	-	
* 1180	NCB	37.10	=	0.00	37.05	1,123	37.10	77,669	2,488,929	1,636	39.35	-	
* 1182	AMIAK	22.80	↑	0.30	22.80	782	22.82	1,155	6,774,440	4,994	54.99	-	
* 1201	TAKWEEN	10.06	↑	0.10	10.04	1,044	10.06	7,471	3,610,040	2,197	63.07	-	
* 1202	MEPCO	17.34	↑	0.30	17.34	2,505	17.36	3,035	11,305,590	7,749	57.24	-	
* 1210	BCI	27.95	↓	-0.15	27.95	1,886	28.00	2	198,942	511	37.61	-	
* 1211	MAADEN	39.80	↑	0.25	39.40	1,513	39.80	13,505	757,098	1,490	48.94	-	
* 1212	ASTRA INDUSTRIAL	22.52	↑	0.36	22.52	17,513	22.56	860	2,954,680	3,685	57.20	-	

2/ The description page, which enables you to view a large group of trading information or financial data for each company separately, whether instant or historical, in the same screen.



3/ Liquidity assessment through the liquidity flow display screen at the level of each individual stock, as well as the momentary and historical liquidity flow analyzer screen for each individual stock or the whole market.



Cash Flow Analyzer							
Intraday	History	Saudi Stock Exchange	All Markets	All Sectors	Period	5 Days	Filter
Symbol	S. Description	Volume	Turnover	Cash Map	Cash In	Cash Out	Net Value
9510	NBM	1,487	343,257.80	84.61	290,422.00	52,835.80	237,586.20
4342	JADWA REIT SAUDI	1,481,877	19,576,468.48	76.40	14,956,140.64	4,620,327.85	10,335,812.79
2222	SAUDI ARAMCO	124,596,218	4,429,123,483...	74.79	3,222,635,203...	1,086,230,607...	2,136,404,595...
9400	FALCOM 30	920,222	30,135,770.40	73.15	22,042,969.31	8,092,800.94	13,950,168.37
9404	ALINMA SUKUK	42,644	4,386,629.80	68.31	2,996,347.23	1,390,282.59	1,606,064.64
4002	MOUWASAT	433,519	51,099,813.60	67.53	34,508,703.74	16,591,110.22	17,917,593.52
1030	SAIB	698,926	10,811,134.00	64.25	6,946,412.26	3,864,721.67	3,081,690.59
4337	MASHAAR REIT	1,464,539	10,816,642.31	63.36	6,853,235.13	3,963,407.22	2,889,827.91
4001	A.OTHAIM MARKET	1,715,415	216,577,548.20	62.59	135,551,551.78	81,025,997.14	54,525,554.64
2190	SISCO	6,198,598	154,556,298.77	60.43	93,396,457.30	61,159,840.81	32,236,616.49
4150	ARDCO	8,425,934	141,597,527.08	59.74	84,583,710.56	57,013,816.67	27,569,893.89
4338	ALAHLI REIT 1	656,455	5,741,311.32	58.96	3,385,131.15	2,356,180.15	1,028,951.00
9501	DWF	311,784	21,292,960.80	58.87	12,534,970.04	8,757,990.75	3,776,979.29
9504	ALSAMAANI	117,234	10,433,882.50	57.88	6,039,151.72	4,394,730.79	1,644,420.93
8210	BUPA ARABIA	699,563	86,075,611.00	57.31	47,721,845.30	35,554,807.72	12,167,037.58
4339	DERAYAH REIT	4,119,422	40,163,724.28	56.30	22,611,337.79	17,552,386.47	5,058,951.32
3090	TCC	7,853,411	109,414,707.56	56.30	61,596,598.95	47,818,108.80	13,778,490.15
4330	RIYAD REIT	3,972,534	32,584,399.46	56.27	18,334,602.60	14,249,796.42	4,084,806.18

4 / Link a different windows in one group such as deals, offers and Bid, the chart in one color and when you click on any stock in the main follow-up list all the linked windows interacts with it.

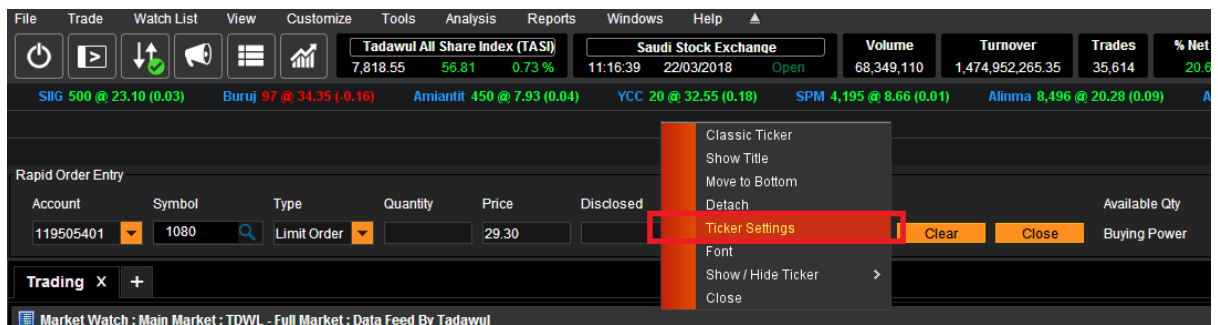
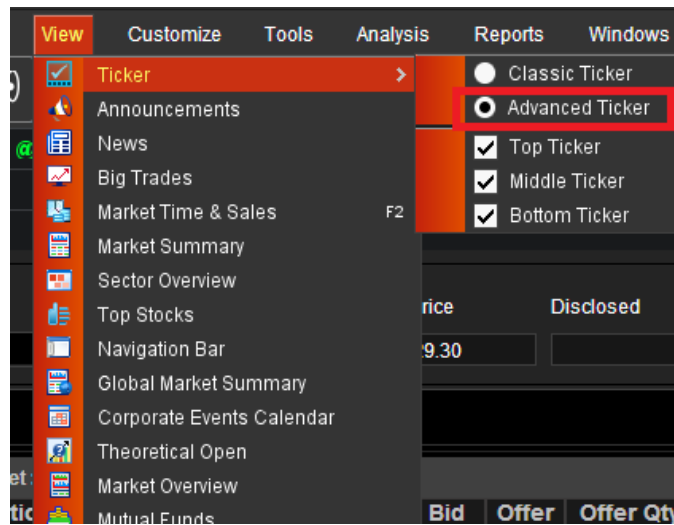
Snap Quote : 1010 : Riyad Bank			
Last Trade	18.92	Best Bid	18.92
Last Qty	5,951	Bid Qty	19,110
Chg.	- 0.10	Best Offer	19.02
%Chg	- 0.53	Offer Qty	36,776
VWAP	19.00	Open	19.00
Volume	2,492,107	High	19.10
Turnover	47,281,921.40	Low	18.90
Trades	1,393	52wk High	25.70
Close	18.92	52 Wk. Low	14.02

Bid	Bid Qty	Splits	Offer	Offer Qty	Splits
18.86	36,200	14	18.94	3,010	2
18.84	18,030	8	18.96	5,000	1
18.82	11,450	12	18.98	20,500	2
18.80	41,624	34	19.00	8,066	9
18.78	530	2	19.02	200	1

Total Bid Qty (Splits)	Total Offer Qty (Splits)
107,834 (70)	36,776 (15)

Notes and settings for Riyadh Mubasher Pro 10+:

- 1 / The customer will be able to transfer cash through the application
- 2 / Control the price bar, where another part is added below to add a certain number of shares to follow Through a display icon, then follow the method below



3/ Increase the font

Market Watch : Main Market : TDWL - Full Market : Data Feed By Tadawul

Symbol	S. Description	Last	% Change	Bid Qty.	Bid	Offer	Offer Qty.
1010	RIBL	14.10	0.57	16,147	14.08	14.10	216,771
1020	BJAZ	12.00			12.00	12.02	5,892
1030	saib	15.62			15.62	15.66	8,558
1040	ALAWWAL						13,973
1050	BSFR						9,909
1060	SABB						7,896
1080	ARNB						368
1090	samba						5,000
1120	Al Rajhi						53,058
1140	ALBILAD						46
1150	Alinma						23,191
1180	NCB						12,401
1201	Takween						29
1202	MEPCO						7,555
1210	BCI						700
1211	MAADEN						12,046
1212	Astra Indust						500
1213	AlSorayai Gro...						3,508
1214	SHAKER						18,412
1301	ASLAK						1,200
1302	Bawan						
1303	EIC						
1304	ALYAMAMAH ...						
1320	SSP						
1330	ALKHODARI						
1810	ALTAYYAR						
1820	Al Hokair Gro...						142

Context menu for SABB:

- Trade
- Market Depth By Price
- Market Depth By Order
- Graph
- ProChart
- Time & Sales
- Time & Sales Summary
- Description Page
- Detail Quote
- Snap Quote
- Full Quote
- Cash Flow Detail Quote
- Trading Monitor
- Alerts
- Progress Monitor
- Order Book Calculator
- News
- Financial Ratios
- Company Profile
- Financials
- Technical Score
- Edit Alias
- Watch List Options Open all options
- Edit
- Send To
- Watchlist

Additional menu items:

- Column Settings
- Selection Type
- Customize
- Currency
- Decimal Places
- Unsort

4 / To save the workspace, right-click on the desktop and save it as an attached file. Upon log out from the application and login again, the same saved settings will appear.

Watch List 1

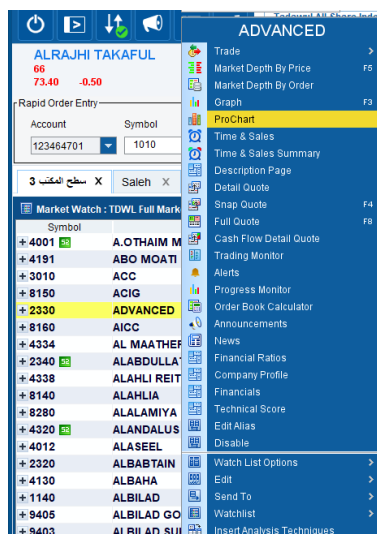
Symbol	S. Description	Last	Last Trend	Chg	Bid	Bid Qty.	Offer	Offer Qty.	Volume	Trades	% Cash Map	Bid Offer R...	OHLIC Map
+1010	RIBL	18.92	+	-0.10	18.92	7,432	18.96	54	2,492,107	1,393	47.49		
+2010	SABIC	89.80	+	0.40	89.70	9,981	89.80	123,102	2,981,091	5,450	57.17		

5 / To know the way to extract the market list completely in Mubasher Pro 10, click on the follow-up menu (Saudi Market) to view the list of entered orders, click on Trade (List of Orders)

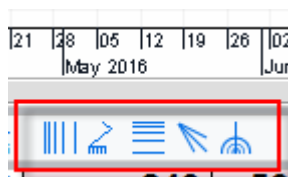


6 / When subscribing to Riyad Mubasher Pro 10+and trying to log in, an "Application Blocked by Java Security" message appears. Therefore, the client needs to install Java software

7 / To facilitate the process of using technical analysis, ProChart can be accessed via an icon in the toolbar or by right-click on the mouse to the stock as indicated in the below image.

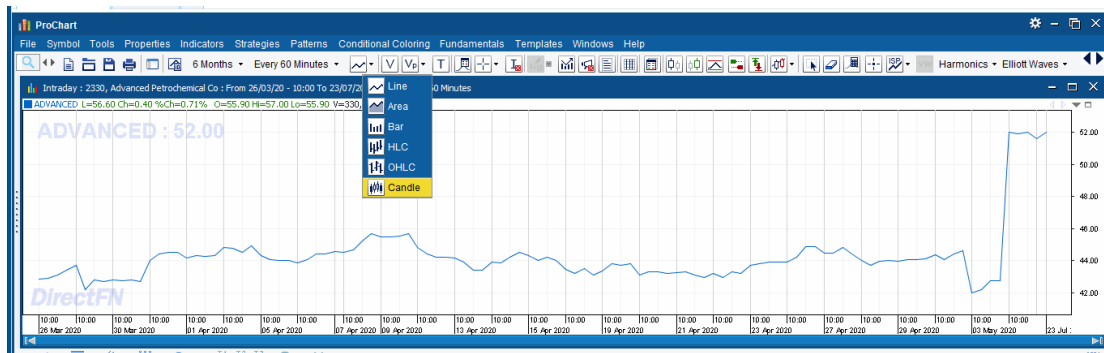


8 / How to display Fibonacci
In ProChart as indicated in the picture



10 / How to change the background color and the Japanese candles

From ProChart as shown in the below image, and to change the settings, double-click on the chart itself and then the settings screen will appear



Riyadh Capital is a Saudi Closed Joint Stock Company with Paid up capital of SR 500 million, licensed by the Saudi Arabian Capital Market Authority NO.07070-37. Commercial Registration No: 1010239234. Head Office: Granada Business Park 2414 Al-Shohda Dist. – Unit No 69, Riyadh 13241 - 7279 Saudi Arabia. Investments services may not be suitable for some investors, given the risks involved including changes in currency rates. Therefore, we advise investors to seek professional advice before investing in stock markets. Terms and conditions are applied.